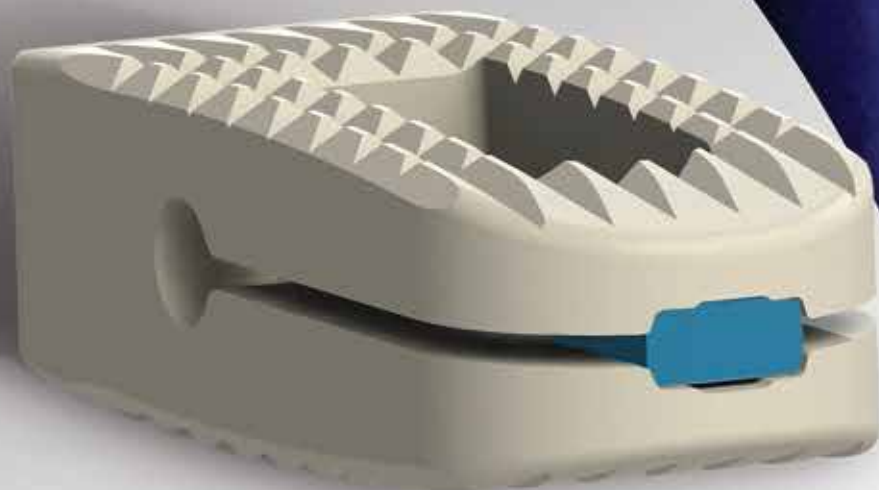
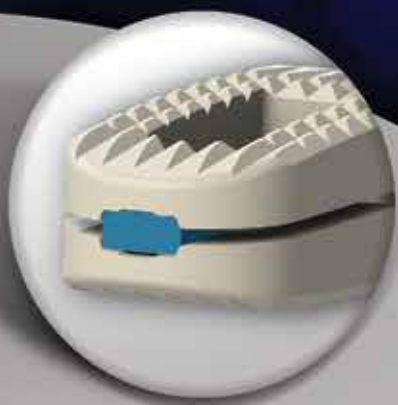


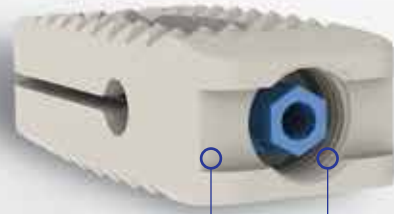
# LorX<sup>®</sup>

expandable plif peek cage



 Tria Spine<sup>®</sup>  
SPINE | ORTHOPEDICS

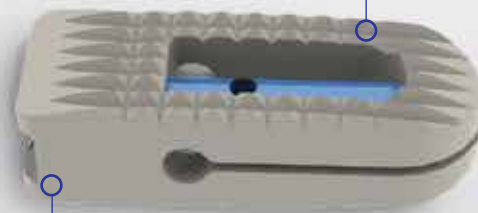
### DESIGN FEATURES



**Better Stability**  
enhanced instrumentation for secure insertion

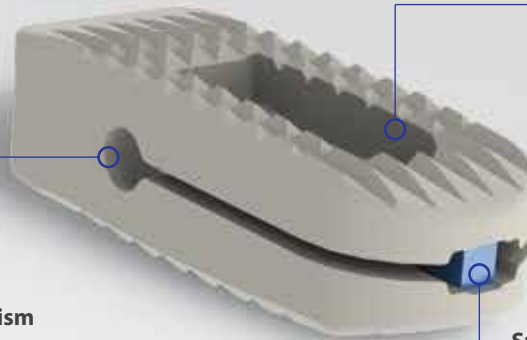
#### Anatomical Shape

original and anatomical design for a secure and better placement



#### Biocompatibility

radiolucent and biocompatible PEEK material (VESTAKEEP by Evonik, ASTM F2026) which provides modulus of elasticity similar to the bone



**Simple expanding mechanism**  
expanding mechanism which comes to open position with a single 90° movement of the shaft

#### Enhanced Bone Fusion

adequate graft space for bone fusion

#### Special Shaft Design

specially designed (patent pending) titanium shaft, positioned in the middle of the cage with extra holes for filling bone grafts

### LorX<sup>®</sup> Expandable PLIF PEEK Cage

LX-06-246	9 x 24 mm	6 mm	LX-06-2410	10 x 24 mm	10 mm
LX-06-247	9 x 24 mm	7 mm	LX-06-2411	10 x 24 mm	11 mm
LX-06-248	9 x 24 mm	8 mm	LX-06-2412	10 x 24 mm	12 mm
LX-06-249	9 x 24 mm	9 mm	LX-06-2413	10 x 24 mm	13 mm