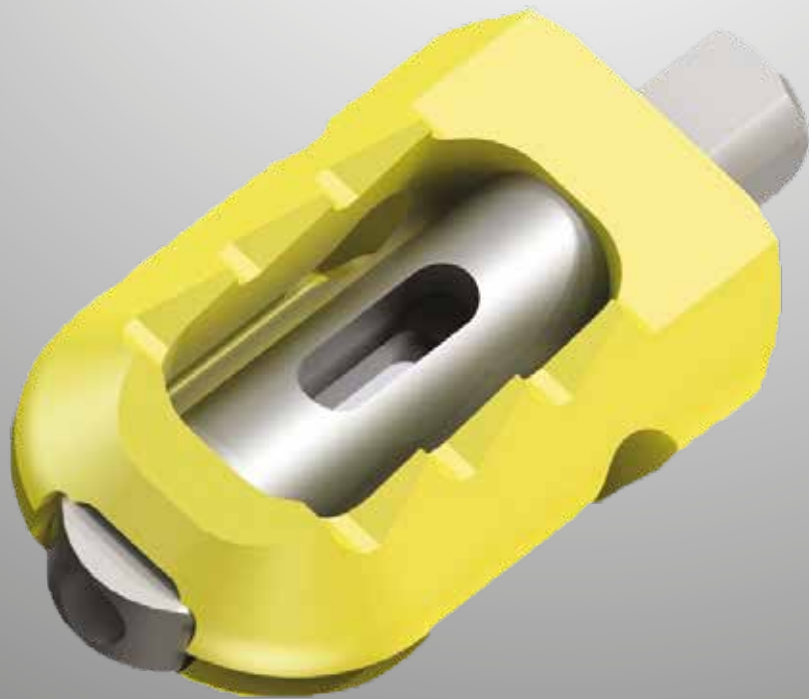


# LorX<sup>®</sup>

cervical expandable facet cage



NEW



 **Tria Spine<sup>®</sup>**  
SPINE | ORTHOPEDICS

## DESIGN FEATURES

### Indications

- \* Degenerated disc (DDD)  
(between C3-C7)
- \* Cervical radiculopathy
- \* Neck pain due to facet arthropathy



### Product specifications

- \* Suitable implants for percutaneous and minimal invasive surgery
- \* Ready to use implants in sterile packages
- \* Upper and lower teeth for secure fixation
- \* Special expanding mechanism and easy insertion

## PRODUCT NAME

## SIZE

## PERCUTANEOUS INSTRUMENT SET



LX-27-152 LorX<sup>®</sup> Cervical Expandable Facet Cage - Small

LX-27-153 LorX<sup>®</sup> Cervical Expandable Facet Cage - Medium

LX-27-154 LorX<sup>®</sup> Cervical Expandable Facet Cage - Large

